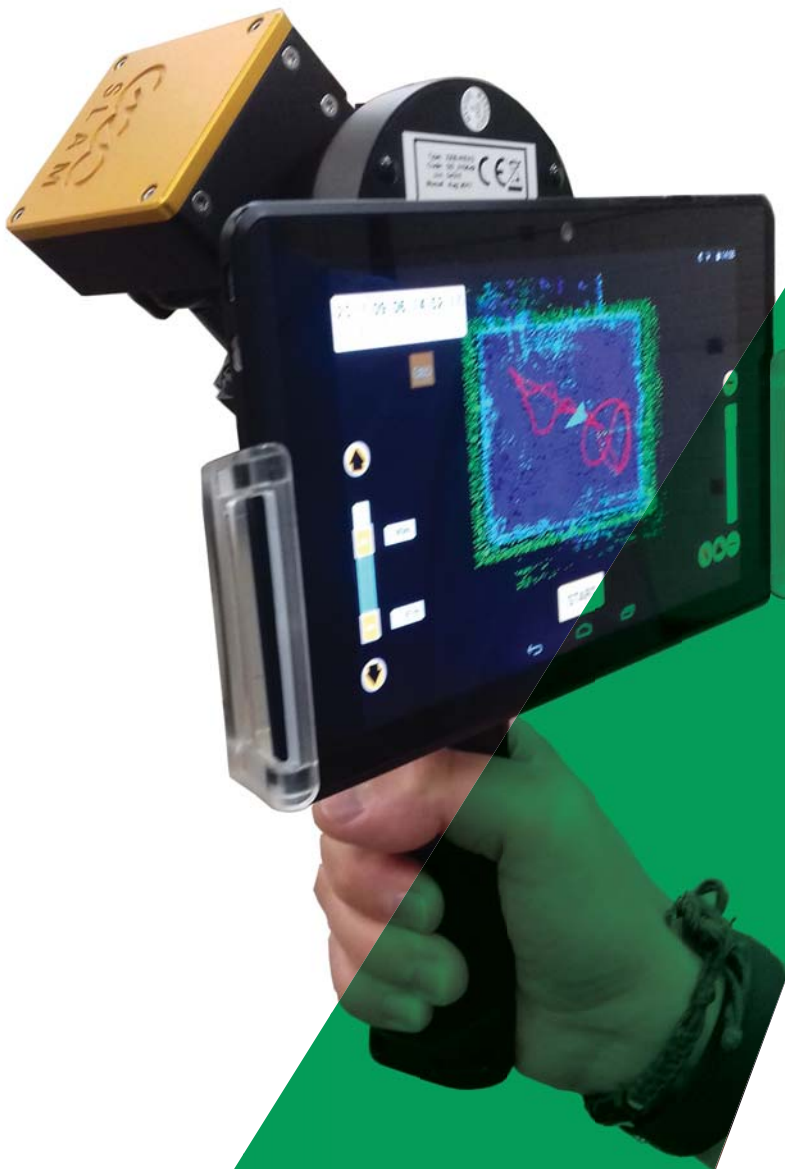


# ZEB-REVO RT Solution

The new realtime solution from the experts in “go-anywhere” 3D mobile mapping technology.

Handheld, lightweight and easy to use laser scanners that allow you to rapidly collect, view and process scan data, simultaneously whilst on the move.



[GeoSLAM.com](http://GeoSLAM.com)

**The new ZEB-REVO RT solution, sold via a global network of over 70 distributors in 50 countries, across 6 continents.**

**System Features**

Maximum Range	30m*
Data Acquisition Rate	43,200 points/sec
Resolution	0.625° horizontal, 1.8° vertical
Angular FOV	270° x 360°
Supply Voltage	14.8V nominal
Supply Current	Max 10A, nominal 2.5A
Power Consumption	30W nominal
Operating Temperature	+10° to +30°C
Operating Humidity	Avoid condensing humidity
Mounting Operation	Removable handle provided, can also be pole or vehicle mounted

\*Maximum range to Kodak white card indoors (90% reflectivity)

Outdoors range may be reduced to 15-20m depending on environmental conditions

**Processing Software**

Requires **GeoSLAM Hub** - our 'All in One' point cloud manipulation software:

- Integrated 2D and 3D viewer
- Modify and reprocess 3D data
- Merge multiple datasets
- Create 2D layouts, sections and elevations with **GeoSLAM Draw**
- Export a range of industry standard formats

**Data Features**

Data Storage Capacity	120GB
Raw data file size	~10MB for every 1 min scanning
Processed data file size	~8MB for every 1 min scanning
Default output file format	Multiple formats including .LAS, .PLY and .e57.
Compatibility	GeoSLAM data is compatible with all major CAD software packages
Graphical User Interface	Compatible with any web-enabled tablet or mobile phone**
WiFi Range	Upto 15m from datalogger

\*\*Tablet or phone not included with kit

**System Accuracy**

Relative Accuracy	1 - 3cm
Absolute Position Accuracy	3 - 30cm (10 mins scanning, 1 loop)

**Sensor Information**

Laser Safety Class	Class I Eye Safe
Laser Wavelength	905nm
Scanner Line Speed	100Hz
Scanner Resolution	0.625° horizontal
Rotation Speed	0.5Hz

### Battery

Battery Type	Lithium Ion
Capacity	50Wh
Nominal Voltage	14.8V
Battery Life	1.5 hours
Charge Time	8 – 12 hours
Chargers Supplied	UK, USA & EU
Weight	550g
Battery Release	Quick-release mechanism

### Casing

IP Rating	IP51 (dust-protected, water dripping)
Cable Connectors	LEMO multi pin
Weight (scanner)	1.0kg
Weight (processing unit)	1.7kg
Weight (total system)	6.3kg
Dimensions (processing unit)	220 x 180 x 470mm
Dimensions (hard case)	460 x 370 x 180mm

### ZEB-CAM Accessory

Camera Type	GoPro Session	Logging Medium	Internal SD card
Mode	Video	Power Supply	Internal Battery
Video Resolution	1440p	Battery Life	2 hours continuous use
Frames per Second	30	Image Syncing	Optical flow using integrated inertial sensor
Image Resolution	1920 x 1440	Connection	1.5m cable with multi pin LEMO connector
Field of View	Ultrawide (~120°x 90°)	Software	Requires GeoSLAM Desktop V3 or GeoSLAM Hub



# Get in Touch

## GeoSLAM

Innovation House  
Mere Way  
Ruddington Fields Business Park  
Ruddington  
Nottinghamshire  
NG11 6JS  
United Kingdom

+44 (0) 1949 831 814  
[info@geoslam.com](mailto:info@geoslam.com)  
[@GeoSLAMLtd](https://www.instagram.com/GeoSLAMLtd)



[GeoSLAM.com](http://GeoSLAM.com)