

# Productivity Study Highlights: AutoCAD® Architecture toolset

## STUDY SUMMARY

Autodesk recently commissioned a study comparing basic AutoCAD to the Architectural toolset (previously known as AutoCAD Architecture) for performing 9 common design tasks.

Results showed that the Architecture toolset provided up to **60% overall productivity gain\*** compared with basic AutoCAD, when these tasks were performed by an experienced AutoCAD user.

**60% overall  
productivity gain\***

basic AutoCAD



1000  
HOURS

Architecture  
toolset



400  
HOURS

Time to complete sample project

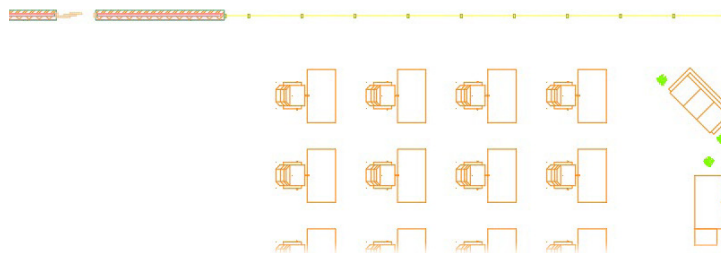
# Benefits of the Architecture Toolset

AutoCAD 2019 includes access to all AutoCAD vertical industry functionality as specialized toolsets. Take your work with you with the AutoCAD mobile app and the new AutoCAD web app.

The Architecture toolset brings dramatic time savings and boosted productivity to common AutoCAD® architectural design tasks.

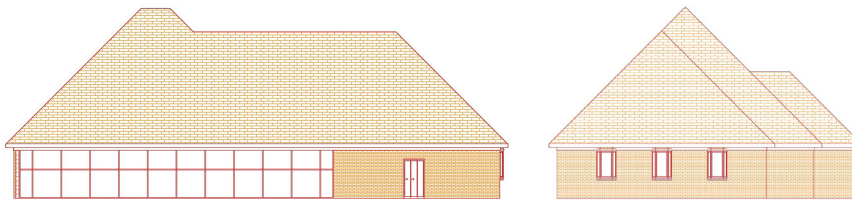
## 1 Floor Plans (*time savings = 50%*)

Provides a huge library of pre-built architectural components that eliminates the need to manually develop symbols and styles such as windows, doors, etc.



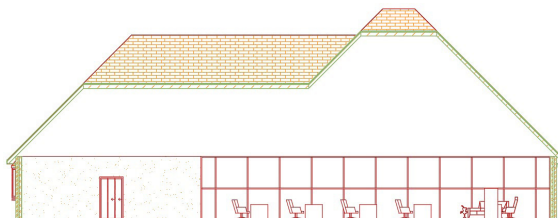
## 2 Elevations (*time savings = 75%*)

Uses the 3D model to generate elevations without the need to project lines from the floor plan, saving tedious 2D editing time required in basic AutoCAD.



## 3 Reflected Ceiling Plans (*time savings = 25%*)

Creates rooms and spaces from the 3D model, automatically creating outlines for rooms that also allow for the automatic creation of ceiling grids.

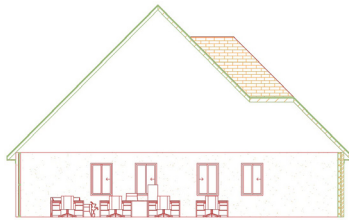


# Benefits of the Architecture Toolset

The Architecture toolset brings dramatic time savings and boosted productivity to common AutoCAD® architectural design tasks.

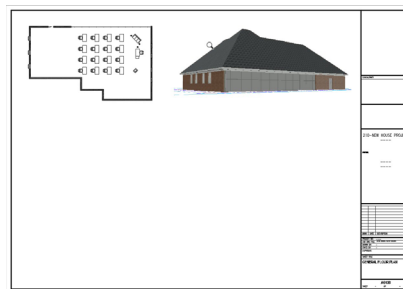
## 4 Building Sections (*time savings = 65%*)

Uses the 3D model to generate building sections in the same way that elevations are quickly created, without the need to project lines from the floor plan.



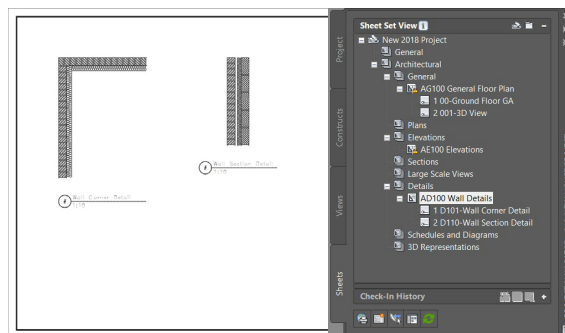
## 5 Sheet Layouts (*time savings = 71%*)

Uses the 3D model so no extra drafting is required to create sheet views. The Architecture toolset contains additional sheet set tools that improve productivity and save time on sheet set creation.



## 6 Details (*time savings = 70%*)

Provides substantial time saving through its use of the 3D model and pre-designed multi-level blocks in the content library.



# Benefits of the Architecture Toolset

The Architecture toolset brings dramatic time savings and boosted productivity to common AutoCAD® architectural design tasks.

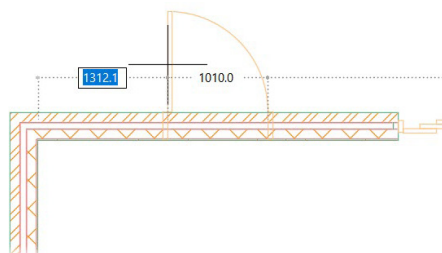
## 7 Schedules (*time savings = 65%*)

Necessary scheduling information is already in pre-drawn content library blocks. Schedules are thus easily created and refreshed after attribute information changes.

WINDOW SCHEDULE					
Number	SIZE		TYPE	MATERIAL	Remarks
	Width	Height			
1	1010	1510	---	---	---
2	1010	1510	---	---	---
3	1010	1510	---	---	---
4	1010	1510	---	---	---
5	1010	1510	---	---	---
6	1010	1510	---	---	---
7	1010	1510	---	---	---
?	?	?	---	---	?

## 8 Project Modifications (*time savings = 42%*)

Intelligent objects maintain their relationships, and design changes can be implemented quickly and easily with updates also reflected in elevations, sections, and details.



## 9 Coordination & Publishing (*time savings = 36%*)

Contains additional built-in publishing tools that speed up the DWF publishing process. The DWFs published also contain all the necessary callouts required to link to the elevations, sections, and details in the project.

