



FenestraPro
Premium

Efficient Façade Design Software for Architects

FenestraPro Premium for Autodesk Revit is design software that enables architects to design energy efficient building façades more cost effectively. It integrates building design with performance during the design stage and strips away the complexities associated with existing analysis software. This allows the Architect to maintain control of the aesthetic design of the building, eliminating costly late stage redesign and improving the design process. Use FenestraPro Premium for Revit to design better performing buildings.



30%
+ Improvement

IMPROVE FAÇADE
DESIGN PROCESS



REAL-TIME
COMPLIANCE CHECKING



ENHANCE GREEN
BUILDING DESIGN



EFFECTIVE TECHNICAL
GUIDANCE

**Improve Your Design, Reduce Time & Maintain Aesthetic Control
WITH 30%+ COST SAVINGS!**



FenestraPro Premium



EARLY STAGE MASSING & DETAILED MODELS

FenestraPro Premium for Revit analyses and interprets early stage conceptual design in relation to the building shape, size and volume, and highlights their implications on its performance.



SITE LOCATION & ORIENTATION

Based on geo-location and orientation of the building, FenestraPro Premium utilises Meteonorm© climate data to analyse the solar heat load on the surface of each façade.



ELEMENTAL & THERMAL PERFORMANCE

Based on elemental thermal performance values and considering the overall thermal performance of their building, the design team can establish the optimal glass to wall ratio.



OPTIMAL DISTRIBUTION OF GLAZING

FenestraPro Premium will give the architect guidance and design parameters on how best to distribute glazing around the building façade to maximise passive solar heat gain.



GLAZING SPECIFICATION TOOL

To control overheating, FenestraPro Premium uses alternative glazing specifications to demonstrate the impact of the different glazing systems on the building's performance.



OPTIMISED SHADING DESIGN

FenestraPro Premium enables the architect to design appropriate shading or fritting for the building to ensure occupant comfort, and that the building doesn't overheat.



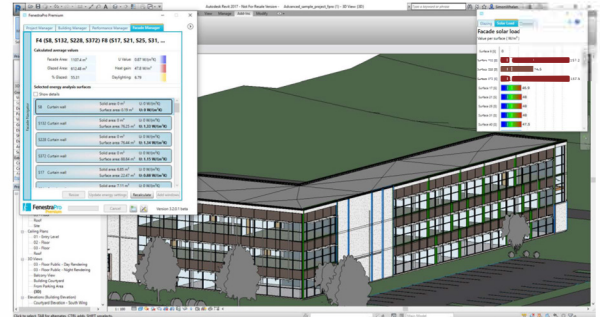
DAYLIGHTING ANALYSIS

Design daylight factors are provided to demonstrate implications with regard to its performance on daylighting levels, thereby reducing the requirement for artificial lighting.

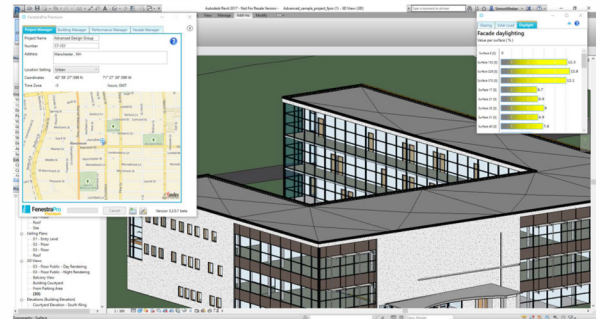


DESIGN & PERFORMANCE PARAMETERS

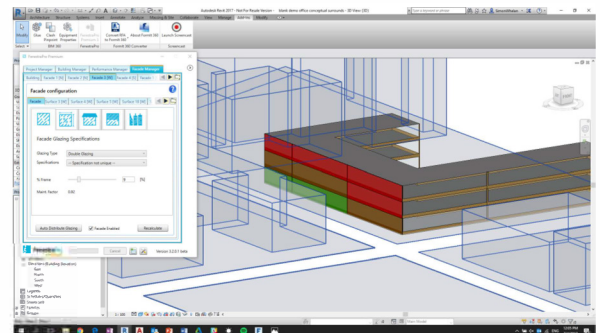
FenestraPro Premium for Revit is the ultimate design software developed specifically to understand the implications of early stage design decisions, and eliminate the need for later stage re-design.



SOLAR LOADS PER FAÇADE / SURFACE



DAYLIGHTING PERFORMANCE PER FAÇADE / SPACE



EARLY STAGE GUIDANCE IN MASSING TOOLS

*"We constantly seek to integrate innovative and cutting-edge tools... As an Add-in for Revit, FenestraPro Premium offers **flexibility and quickness** to test different forms, and **provides detailed information** about thermal, solar and daylight performance that **helps us make informed decisions** about building orientation, solar shading, and amount, distribution and type of glazing. Getting guidance on these decisions **early in the design process** offers the ability to have **a greater positive impact on the design**, and **avoid cost implications** of design changes later on."*



Natalia Quintanilla, Sustainability Specialist and Architect,
Adrian Smith + Gordon Gill Architects



*"There are so many options and ways that any design can go, and so many explorations that are happening on any project during the design phase. Being able to distil these options down to a set of criteria that **allow you to meet the aesthetic demands and needs**, while also **optimizing** them for energy consumption is impossible without tools that pair those things together. **There are not many, if any, tools that do that, besides FenestraPro.**"*

Matt Petermann, Digital Practice Manager,
Perkins & Will

*"FenestraPro Premium is a **feature rich solution** to a problem that has yet to be fully addressed and would be a great addition to any energy analysis workflow. It's like a full-on a separate program that is capable of doing a tonne of stuff and is **one of the most "fully baked" add-ins I've seen.**"*



Carl Storms, Senior Applications Expert and Blogger,
The BIMsider



FenestraPro
Premium



MICROSOLRESOURCES



www.microsolresources.com



info@microsolresources.com



888-768-7568